

SOFTTRAX

MTL - VTMS

GPS Tracking System



Based on the key elements of information and control, MicroTech Labs has developed a powerful, flexible and reliable Vehical Tracking Management System (VTMS) called SofTrax. SofTrax provides complete management and control functions of its entire VTS network, including monitoring, tracking and controlling of the vehicle. It ensures secure communication with the vehicle.

FEATURES

- Vehicle Management and Control
- Communication via GSM / Internet
- Graphical User Interface
- Remote control of vehicle (for e.g. engine kill, door unlock, honk horn / lights etc)
- Displays and records position, speed and heading of the vehicle
- Records the following events:
 - Over Speed
 - Under Speed
 - Harsh Brake
 - Harsh Acceleration
 - Main Battery Failure
 - Backup Battery Failure
 - Zone Crossing
 - GPS Lock / Unlock
 - GPRS In / Out
 - Analogue / Digital Input Change
 - On Demand Output Change
 - Time Based Events
 - Distance Based Events
- Provides trip information (optional) - Idle time, running time and distance traveled
- Digital / Analogue input readings
 - 4 Analogue Inputs (e.g. fuel gauge reading, temperature reading) - External Transducers are required
 - 4 Digital Inputs (e.g. door open/close, ignition on/off, panic button on/off)

Features (Contd.....)

- Advanced Geo Fencing
 - 32 Zones
 - Black/White
 - Circular/Rectangular
- Programmable audible alarms for each event

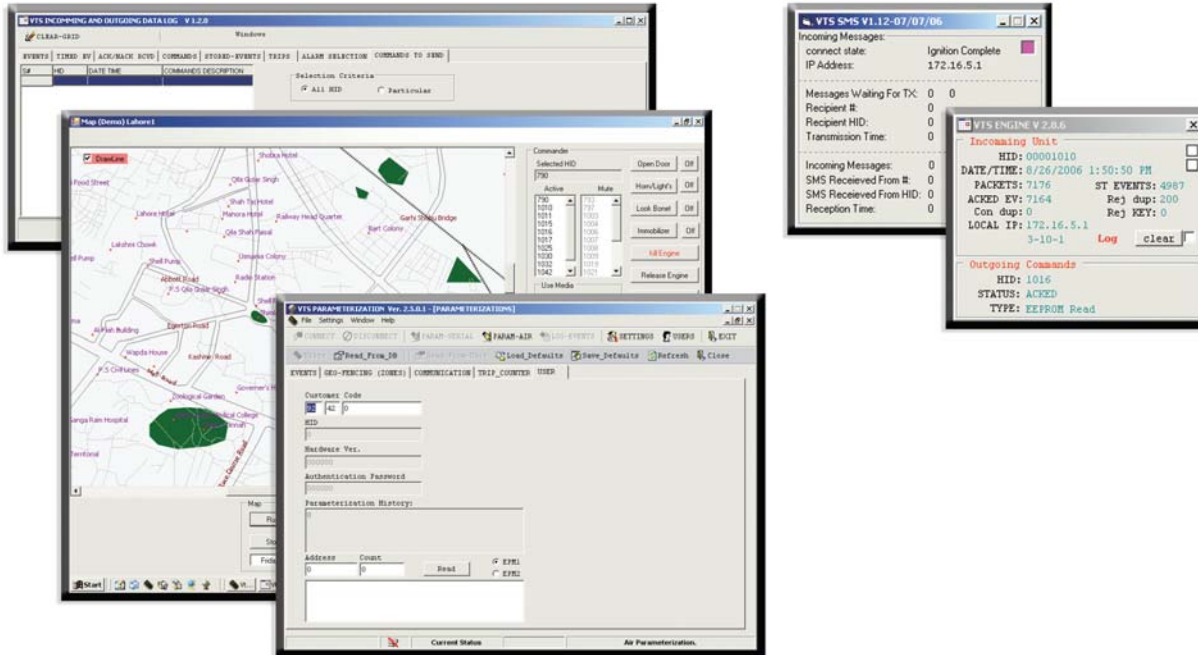
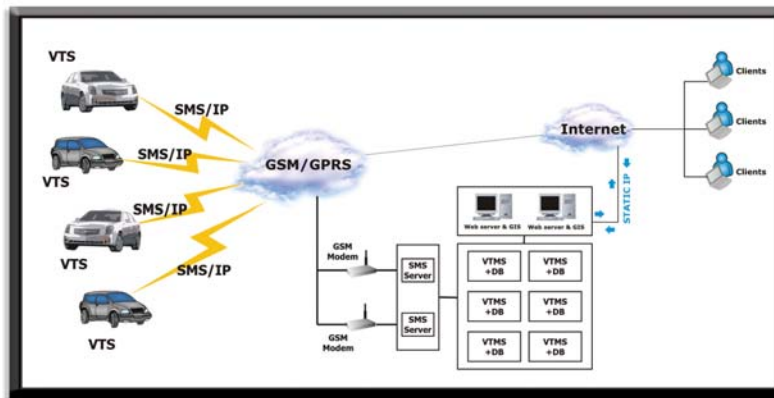
Software Platform

- Windows 2000 Advanced Server
- SQL Server 2000 Enterprise Edition

Hardware Requirements

- Processor – 3.0 GHz or higher
- Intel Server Board
- Hard Disk – 120 GB SATA

- 1GB (2x512), DDR-2 400MHz ECC 1R Memory
- Single Processor only
- CD Writer
- Server Casing Intel (recommended)
- Keyboard
- Mouse
- Monitor (1024 x 768, 85 Hz minimum)
- MTL-GSM Modem (for SMS communication)
- Internet / VPN connection with GPRS and static IP address
- Following ports should be available on the backside of system's casing:
 - COM1
 - COM2
 - At least 4 USB Ports
 - PS2 Mouse Port
 - 2 Ethernet Ports



mt MicroTech Labs
 MicroTech Labs Core Engineered, Optimal Solutions

Head Office
 Simla Tower, 5-Davis Road, Lahore, Paksitan
 Tel: 92-42-111-111-684 Fax: 92-42-6370749
 Email: marketing@mtlimited.com URL: www.mtilimited.com



ISO 9001:2000 Standards

MTEVTS